



GRL 2020 Asia

Metadata Developments in TELDAP

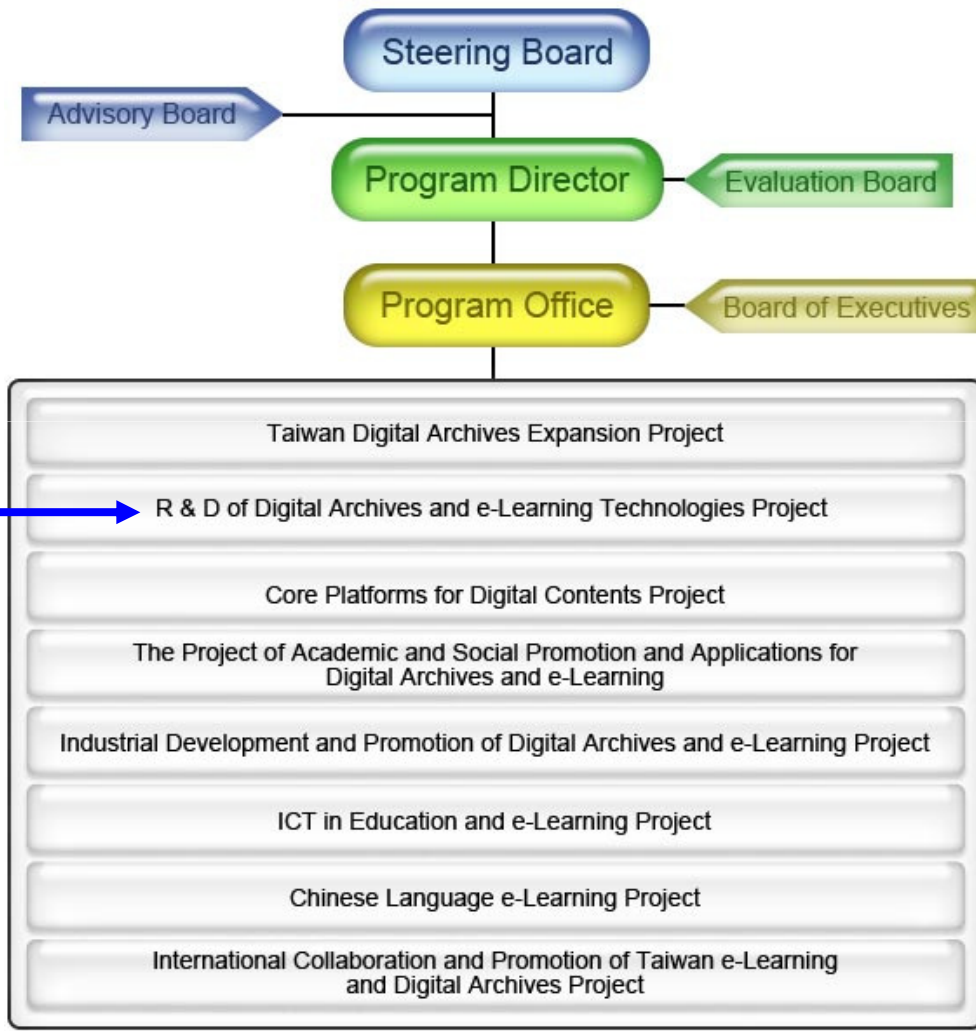
Ya-ning Arthur Chen

MAAT, TELDAP, Taiwan

24 Feb., 2009



Organization Chart of TELDAP

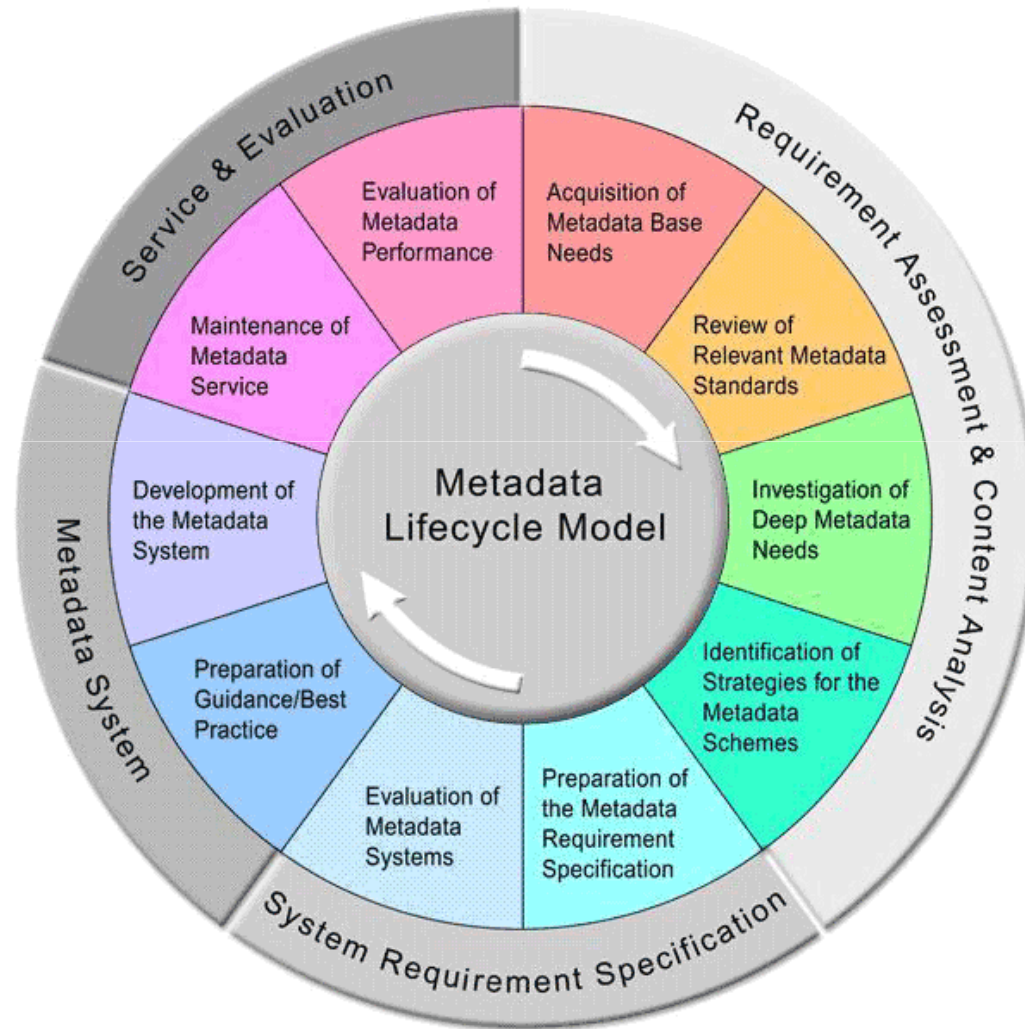


MAAT:

**Metadata Architecture
and Application Team**



Metadata Lifecycle





Layers of Knowledge Management for Metadata in the TELDAP





Metadata Stds.¹

- Domain specific
 - MARC 21
 - CDWA
 - EAD
 - HISPID
 - CSDGM
- Common Core
 - Dublin Core
 - CDWA Lite
 - VRA Core
 - Darwin Core



Metadata Stds.²

- Data value
 - Authority file: Chinese Personal Names
 - Place name: integration with GIS applications
 - Schemes for Subject



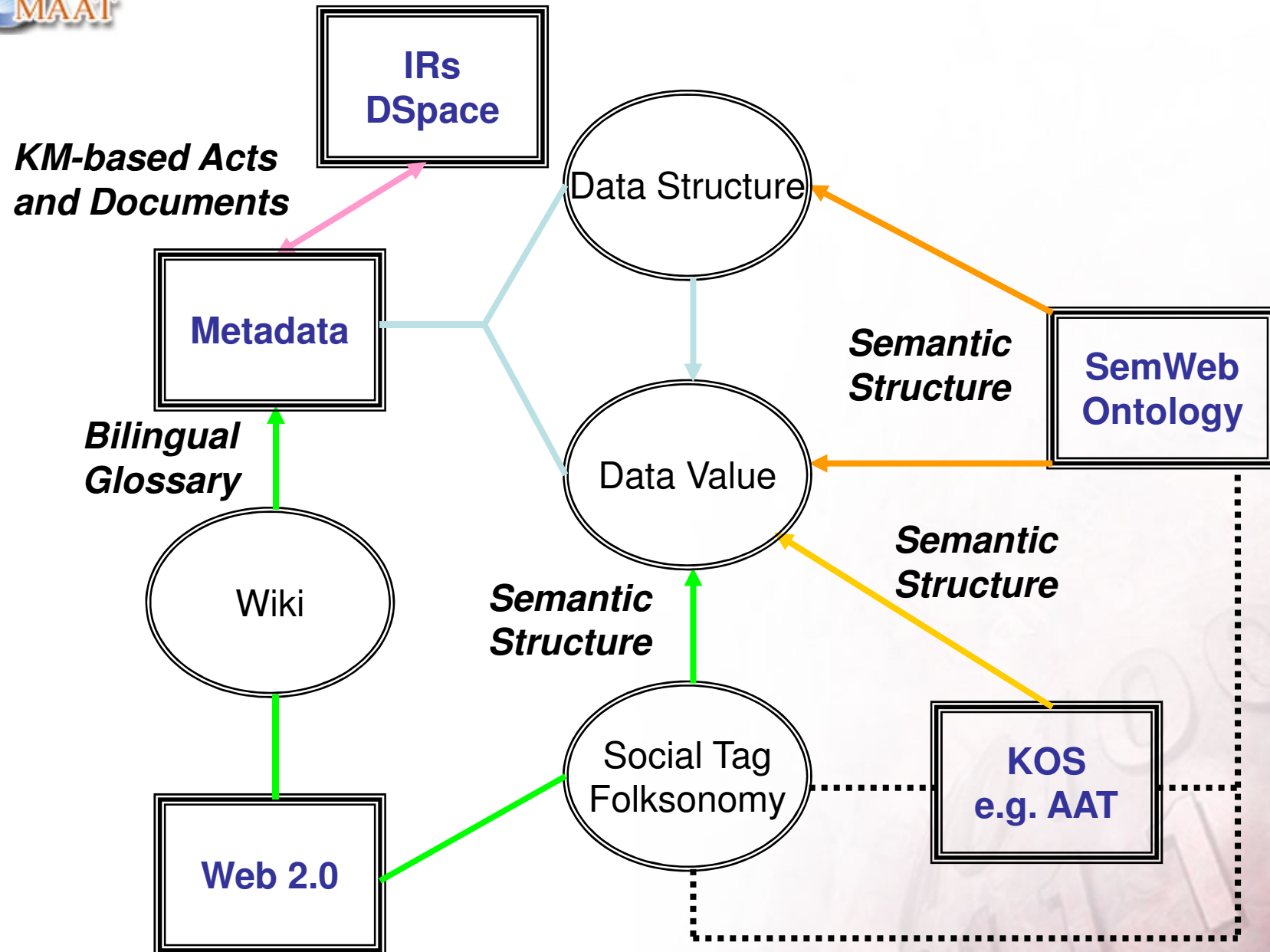
Challenges

- Reuse for different purpose
Metadata keeps a step towards evolution from in-depth description for supporting research to
 - Public use by and feedback from netizens on Internet
 - Elearning for teaching and social learning
 - Value-added and commercial applications
 - Digital preservation



Possible Solutions

- A serious examination on current approaches needs to explore their feasibilities
 - Knowledge Organization System (KOS) : such as bilingual thesaurus of AAT
 - Semantic web and ontologies
 - Web 2.0: Social tagging and folksonomy
- How to recontext and reuse are still core issues for semantic discovery, preservation and interoperability across over digital collections of various institutions.





Thanks for your attention.

